

1-400 3-Point Latch

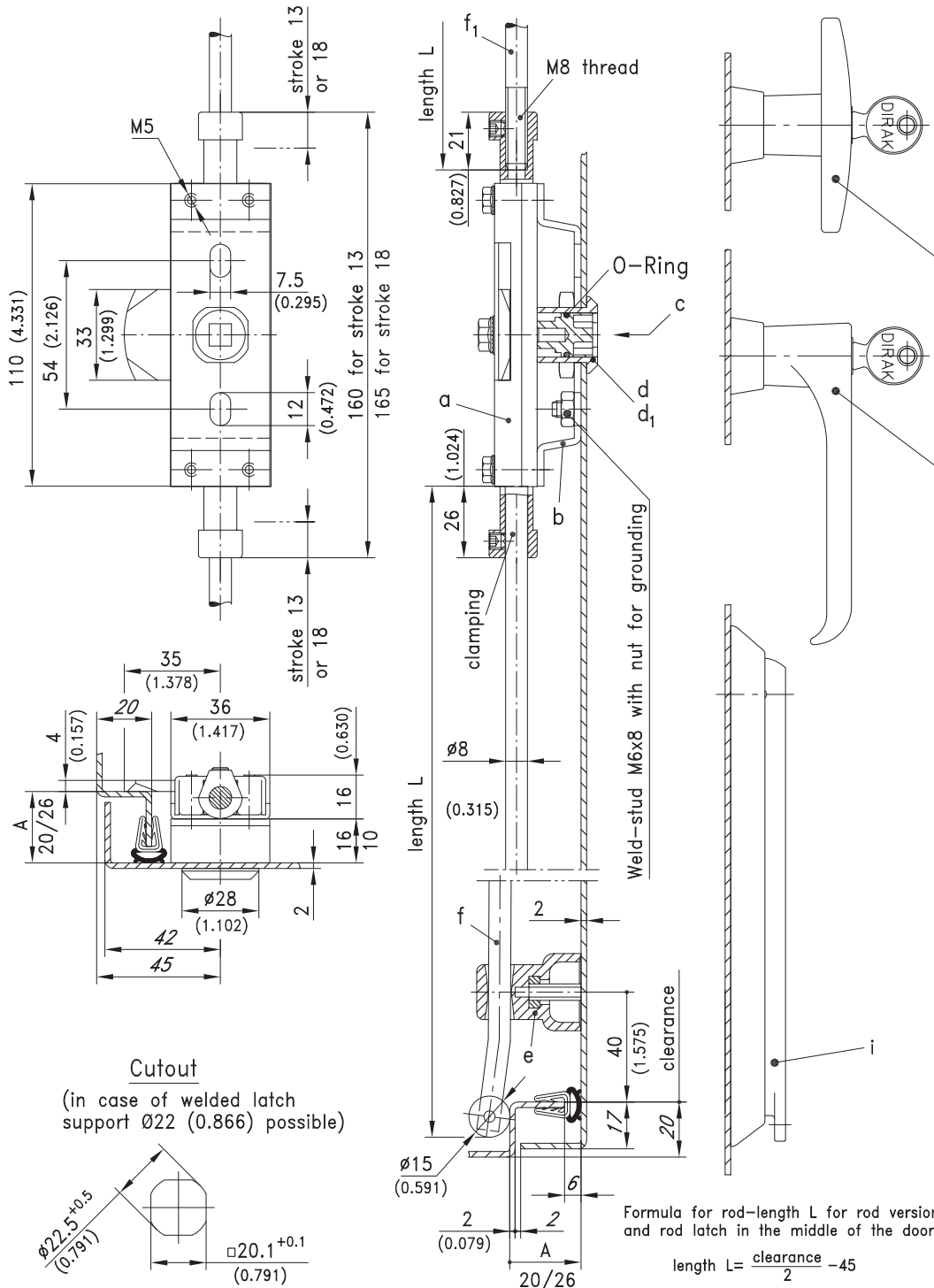
for Quarter-Turn cutout



Rod Latch system screw-in or weld-on.
Heavy duty version.

Material:

- a) and a1)
- **Rod Latch:** steel, zinc plated and zinc die
- b)
- **Lock support:** steel, zinc plated
- c)
- **Insert:** zinc die, chrome plated
- d) and d1)
- **Escutcheon:** zinc die, chrome plated
- e)
- **Rod Guide:** PA, black
- f) and f1)
- **Round rods:** steel, zinc plated



1-400 3-Point Latch

for Quarter-Turn cutout

| | | | | |
|--|----------------|---------------|---------------|---------------|
| a) Rod Latch for Round Rod Ø8mm | | Stroke 13 | Stroke 18 | see page |
| RH version | | 235-9001 | 235-9003 | |
| LH | | 235-9002 | 235-9004 | |
| a1) Rod latch for round rod threaded M8 | | | | |
| RH | | 235-9005 | 235-9007 | |
| LH | | 235-9006 | 235-9008 | |
| b) Latch support for RH and LH version | | | | |
| Lock support A20 | | 235-1001 | 235-1001 | |
| Lock support A26 RH/LH | | 235-1002 | 235-1002 | |
| c) Insert with screw M6x10 | | | | |
| Square 6mm | | 235-9101 | 235-9101 | |
| Square 7mm | | 235-9102 | 235-9102 | |
| Square 8mm | | 235-9103 | 235-9103 | |
| Triangular 6.5mm CNOMO | | 235-9104 | 235-9104 | |
| Triangular 7mm | | 235-9105 | 235-9105 | |
| Triangular 8mm | | 235-9106 | 235-9106 | |
| Double bit 3mm pin | | 235-9107 | 235-9107 | |
| Double bit 5mm pin | | 235-9108 | 235-9108 | |
| Daimler Benz | | 235-9109 | 235-9109 | |
| d) Escutcheon for double bit only | | | | |
| Escutcheon A20 | | 235-9201 | 235-9201 | |
| Escutcheon A26 | | 235-9202 | 235-9202 | |
| d1) Escutcheon for all other insert variations | | | | |
| A20 | | 235-9203 | 235-9203 | |
| A26 | | 235-9204 | 235-9204 | |
| e) Rod Guide for bending A20 | | 200-3601.03 | 200-3601.03 | 02.99, 02.101 |
| Bending A26 | | 200-3602.03 | 200-3602.03 | |
| f) Round rods with rollers, to be cut | L in mm / inch | | | 02.97 |
| Round rods with rollers | 400 / 15.748 | 201-9001 | 201-9001 | |
| | 500 / 19.685 | 201-9020-0500 | 201-9020-0500 | |
| | 600 / 23.622 | 201-9002 | 201-9002 | |
| | 700 / 27.559 | 201-9020-0700 | 201-9020-0700 | |
| | 800 / 31.496 | 201-9003 | 201-9003 | |
| | 900 / 35.433 | 201-9020-0900 | 201-9020-0900 | |
| | 1000 / 39.370 | 201-9004 | 201-9004 | |
| | 1100 / 43.307 | 201-9020-1100 | 201-9020-1100 | |
| | 1200 / 47.244 | 201-9005 | 201-9005 | |
| Customized lengths | | | | 02.98 |
| f1) Round rod Ø8 threaded M8. Length L=1000mm | | 201-0801-1000 | 201-0801-1000 | |
| Optional: | | | | |
| Water- and dust-tight according to IP65 by: | | | | |
| g) O-ring 12x2mm | | 200-1001 | 200-1001 | |
| h) Flat external seal | | 200-0901 | 200-0901 | |
| i) Swinghandle | | | | 03.27 |
| j) T- and L-Handle | | | | 02.96 |