

1-250 Pull and Lock Hook

with compression



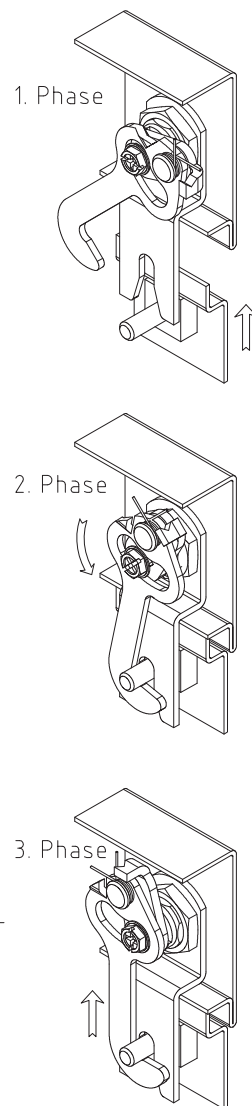
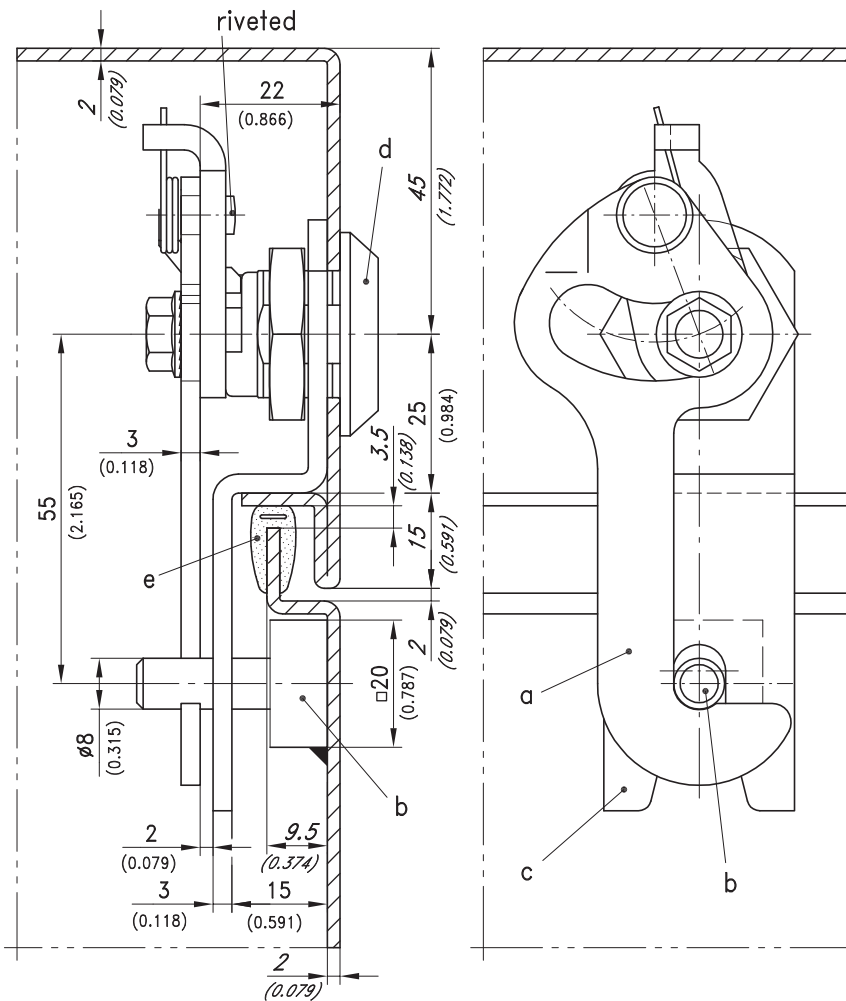
Pull and lock hook with compression.

- 5mm compression/pulling distance.
- With 90° stroke.
- Vibration-proof.
- Latching direction is always clockwise.
- The extremely positive torque ratio allows for controlling this hook-latch by a cylinder latch.
- Very suitable for applications on 19" racks and sliding doors.

- This device can be operated by all Quarter-Turns or handles on product system 1-100, 1-101, 1-140 to 1-154.

Material:

- a) **Pull and lock hook:** steel, zinc plated
- b) **Locking stub:** steel, zinc plated
- c) **Line-up fork:** steel, zinc plated



The latching- and compression process has 3 phases:
 1. phase: Open position.
 2. phase: Hook catches behind the frame pin and continuing the closing rotation, the hook is then being pulled automatically against the frame pin. The pulling stroke is 5mm.
 3. phase: At the end of rotation process the hook has a vibration proof latch behind the frame pin.

version	Part No.	see page
a) Pull and lock hook	200-9602	
b) Weld-on pin for pull and lock hook	200-3704	
Please order separately:		
c) Line-up fork	200-3703	
d) Housings and inserts or handles		02.40, 02.41, 02.48, 02.49
e) e.g. Gasket	209-0302	07.09