

# 1-020SL PA Fastener □9.5 and □12.7

for 3.0-3.5mm and 4.0-4.5mm clamping range, for □9.5 or □12.7 Cutout



Polyamide, clip-in Fastener for □9.5 or □12.7 cutout or with 10mm gap, e.g. aluminum profiles.

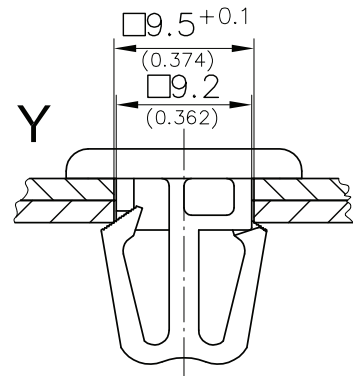
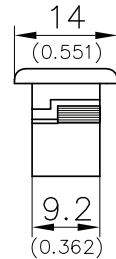
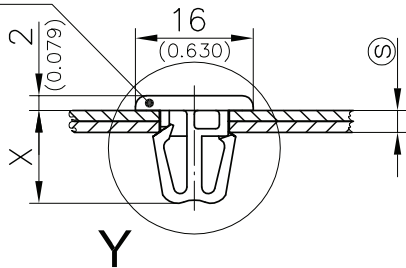
**Material:**

- **Fastener:** polyamide, black

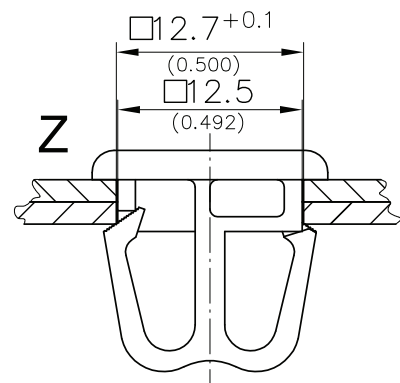
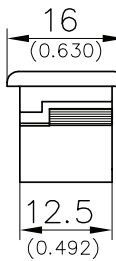
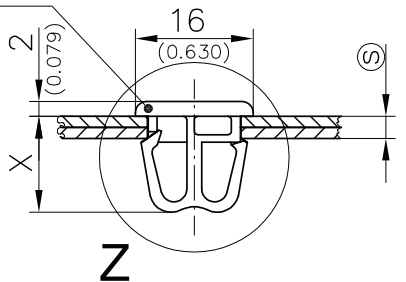
- Clips into the installation cutout for simple tool-less installation.
- Audible click ensures proper secure installation.
- The square base □9.2 and □12.5 prevents the joiner from turning within the installation cutout.



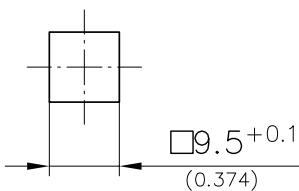
a) and b)



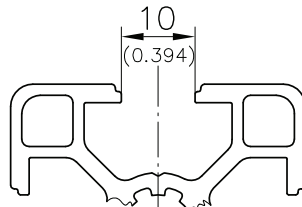
c) and d)



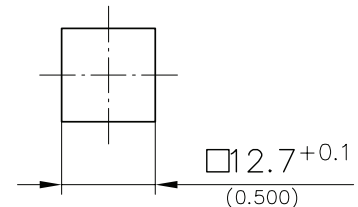
Cutout for a) and b)  
incl. paint



Aluminium profile  
fit for a) and b)



Cutout for c) and d)  
incl. paint



	dimension X in mm / inch	clamping range ☺	Part No.	sales unit
a) PA Fastener □9.5	12.6 / 0.496	3.0 - 3.5	214-0109.51-00000	250
b) PA Fastener □9.5	13.6 / 0.535	4.0 - 4.5	214-0109.51-10000	250
c) PA Fastener □12.7	13 / 0.512	3.0 - 3.5	214-0109.51-20000	250
d) PA Fastener □12.7	14 / 0.551	4.0 - 4.5	214-0109.51-30000	250

Other ☺ - dimension on request!