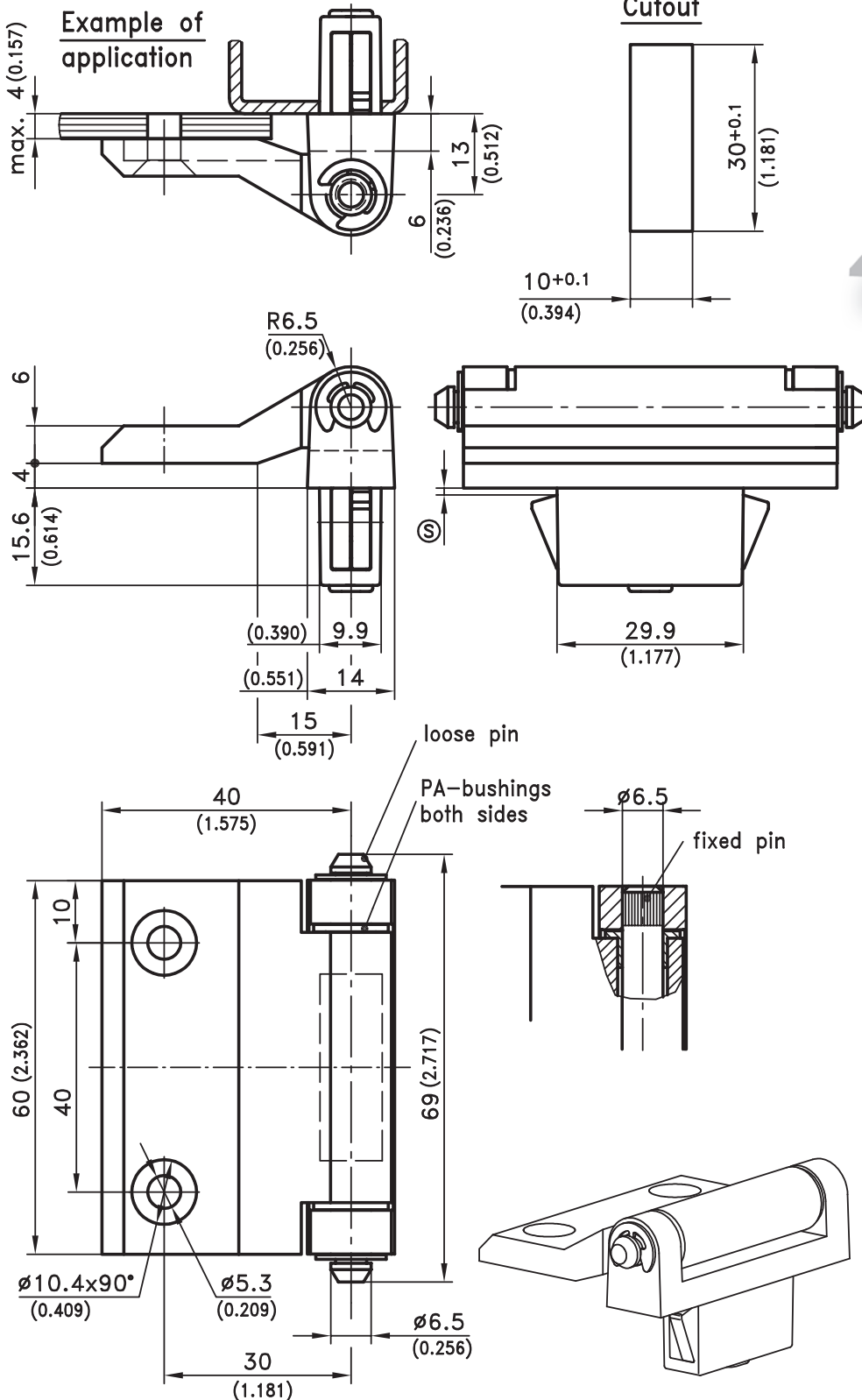
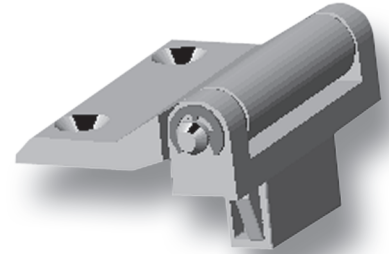


4-340SL Hinge Pr01 SNAP-LINE 180°

Nested door



- 180° Hinge SNAP-LINE.
- Opening angle max. 180°.
 - Frame-part with D•SNAP technology.
 - Door-part with countersunk holes for screws M5.
 - Further details and dimensions (product system 4-340).
 - Cutout-Cover for cutout 30x10: 292-0401.00-03010.
 - Reinforcement plate for thin-walled sheets and for higher loads: 292-0702.15-01030.
 - Tool for uninstallation: 292-0306.80-02530.

Material:

- **Hinge parts:** zinc die, black E-COATED
- **loose and fixed pin:** stainless steel
- **Bushings:** PA, natural
- **Washers:** stainless steel
- **Snap wedges:** sintered steel
- **Spring:** spring steel
- **Plug:** PA, red

clamping range (S)	with loose pin	with fixed pin
1.2 - 1.7	417-9106.00-00015	417-9109.00-00015
1.7 - 2.2	417-9106.00-00020	417-9109.00-00020
2.2 - 2.7	417-9106.00-00025	417-9109.00-00025
2.7 - 3.2	417-9106.00-00030	417-9109.00-00030

Other (S) - dimensions on request!

12/15/08

© copyright by DIRAK / Germany

