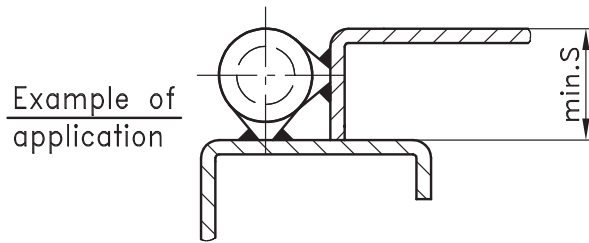
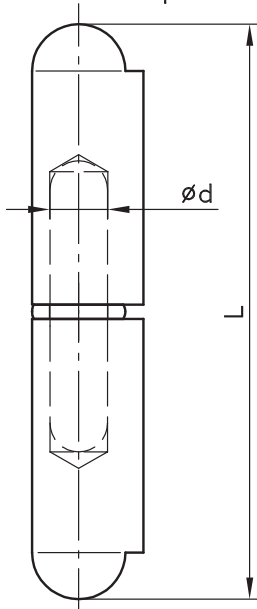


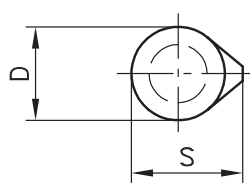
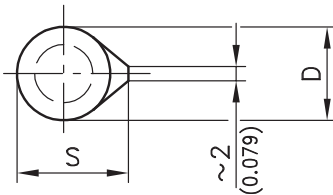
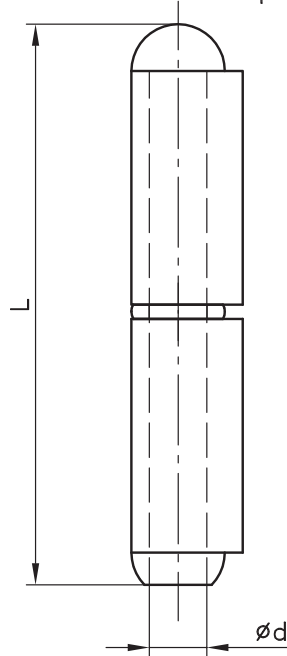
4-310 Hinge Pr04 180° for surface mounted door



Version A
with fixed pin



Version B
with loose pin



Weld-on Hinge.

Material:

- Hinge parts: steel, untreated
- Pin: steel or brass
- Washer: brass

Version A		Dimensions				Version B	
Steel pin	Brass pin	L	D	S	d	Steel pin	Brass pin
223-9001*	223-9101*	40/ 1.575	8/ 0.315	10/ 0.394	5/ 0.197	223-9201	223-9301
223-9002	223-9102	50/ 1.969	8/ 0.315	10/ 0.394	5/ 0.197	223-9202	223-9302
223-9003*	223-9103*	60/ 2.362	10/ 0.394	12/ 0.472	6/ 0.236	223-9203	223-9303
223-9004*	223-9104*	70/ 2.756	**10/ 0.394	**12/ 0.472	**6/ 0.236	223-9204	223-9304
223-9005*	223-9105*	80/ 3.150	13/ 0.512	**16/ 0.630	8/ 0.315	223-9205	223-9305
223-9006	223-9106	90/ 3.543	**13/ 0.512	**16/ 0.630	**8/ 0.315	223-9206	223-9306
223-9007*	223-9107*	100/ 3.967	16/ 0.630	20/ 0.787	10/ 0.394	223-9207	223-9307
223-9008	223-9108	120/ 4.724	16/ 0.630	20/ 0.787	**10/ 0.394	223-9208	223-9308
223-9009	223-9109	135/ 5.315	18/ 0.709	**22.5/ 0.886	12/ 0.472	223-9209	223-9309
223-9010	223-9110	150/ 5.906	20/ 0.787	25.5/ 1.004	13/ 0.512	223-9210	223-9310
223-9011	223-9111	180/ 7.087	20/ 0.787	25.5/ 1.004	**13/ 0.512	223-9211	223-9311
223-9012	223-9112	200/ 7.874	23/ 0.906	**29/ 1.142	16/ 0.630	223-9212	223-9312

* ex stock

**** ATTENTION:** For reasons of optimizing our manufacturing process, some dimensions have slightly changed. The mentioned dimensions are valid from about the middle of 2004.

02/12/08

© copyright by DIRAK / Germany

